



Bright Horizons FOUNDATION for Children

NEWSLETTER JUNE 2024

PROGRESS SO FAR:

4 NEW BRIGHT SPACES OPENED

23 BRIGHT SPACES RECEIVED NEW RESOURCES

£44,811 RAISED BY 1,595 DONORS*

(*100 YOUR WAY JUST GIVING PAGES)

>>> WELCOME

Welcome to the fourth edition of the newsletter from the Bright Horizons Foundation for Children. We have had an encouraging first half of the year and have been overwhelmed by the generosity and enthusiasm of our supporters, who have fundraised, donated, and given their time, helping us to make a difference in the lives of vulnerable children and families. The impact of our Bright Spaces was confirmed in our survey of Bright Space partners at the beginning of the year, and we are making great progress towards our £100,000 target and the opening of our 100th Bright Space! Read on to find out more.

>>> BRIGHT SPACE IMPACT RESULTS

At the beginning of the year we conducted our annual Bright Space partner survey to measure the impact of our Bright Spaces, and to ensure they continue to meet the needs of our agency partners, children and families.

We were delighted with the results:

- Approximately **29,600** children were supported in 2023
- **100%** of our Bright Space partners said that their Bright Space positively impacts children and families, with **75%** citing a 'major impact'
- **100%** satisfaction among our Bright Space partners, of which **85%** are 'very satisfied'

Our partner at the Whittington Hospital said, "Our Bright Space is loved by all ages, families and staff. To have a space away from the clinical environment of the ward helps reduce anxiety and stress, and provides the opportunity for play to flow naturally, for patients and adults to socialise, get fresh air and time out from all the medical equipment beeping and the harsh lights on the ward."

Thank you to all the Bright Space partners who took the time to complete the survey.

You can download a copy of the Bright Space Impact Report [here](#).

I love seen play room look nice
 Thank you for what you have done to
 make a special nice play room.
 Kids are loved to be here and happy
 to come and play every day. Thank
 you for every thing that you have done
 to make our kids happy.

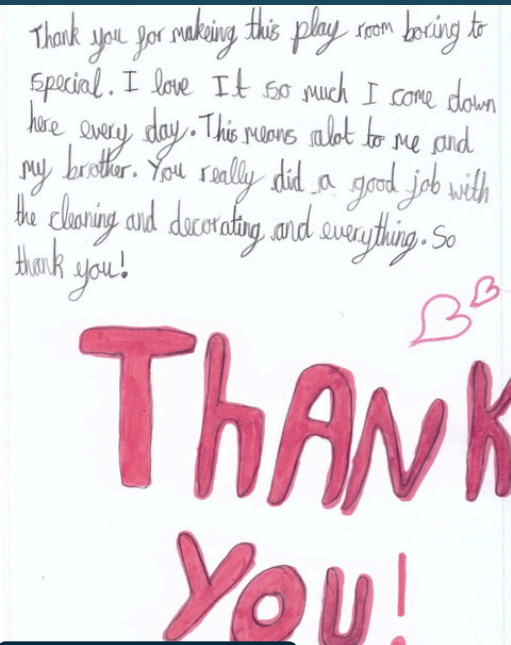
Note from a refugee resident



Sefton Bright Space opening



Salford Bright Space opening



Note from a refuge resident



NEW: SEFTON WOMEN'S & CHILDREN'S AID

Our second Bright Space of the year to open was in partnership with Sefton Women's and Children's Aid.

The project was supported by the Bright Horizons Kirkby Nursery community and Bright Horizons colleagues, who collectively raised £1,000 towards the project; Bright Horizons' maintenance partner, Linaker, who raised £2,400 climbing the Yorkshire Three Peaks; and the Fence Club charity which donated £850. Their generous contributions played a vital role in transforming the space into a versatile children's area suitable for all ages.

Steph, a representative from Sefton Women's and Children's Aid, said, "We are incredibly grateful to the Bright Horizons Foundation for Children and their volunteers for their invaluable support in creating this Bright Space. It will undoubtedly make a significant difference in the lives of the families we serve."

NEW: SALFORD WOMEN'S AID

In May we celebrated the official opening of two Bright Spaces in partnership with Salford Women's Aid.

Bright Horizons nurseries in the North West, and colleagues from Bright Horizons Work + Family team, collectively raised almost £5,000 and volunteered towards the project; grants were awarded by the Morrisons Foundation and Fence Club; and Lostock Installations and Linaker donated labour and supplies for the decorating.

The Bright Spaces consist of playroom and lounge, including a dedicated area where older children can complete homework and unwind in comfort. Additionally, the spaces cater to the needs of younger children and babies, ensuring that all age groups are provided with a nurturing and stimulating environment, with a range of resources, including age-appropriate toys, games, books and creative materials.

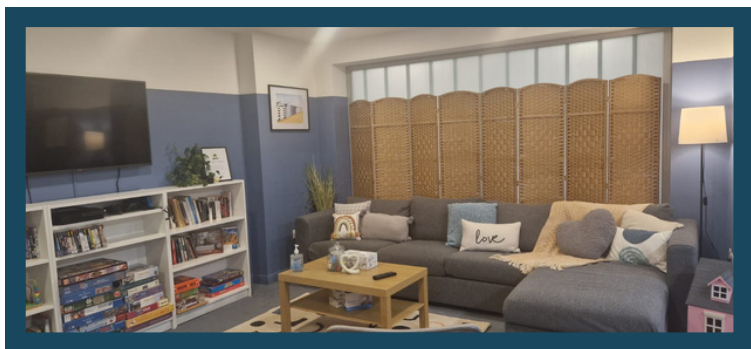
Leading the set-up of the Bright Space was our Bright Space Manager, Tracy, who said, "It is a privilege to work with Salford Women's Aid and to help set-up Bright Spaces at their refuge. I am incredibly proud of the efforts made by the entire Bright Horizons family, and the generosity of our partners, as together we are making a difference in the lives of vulnerable children and families in our communities."

SAVE THE DATE! 8-12TH JULY 2024

During the week of 8th to 12th July, the Bright Horizons community will be showing its appreciation for Bright Spaces by sharing heart inspired images on social media, using the hashtag #loveforbrightspace. Will you join us? Please show your support and help spread the word. You can also donate [here](#).

BRIGHT SPACE NEWS CONTINUED

RENEWAL: ST ELIZABETH HOSPICE



In March, we refurbished our Bright Space at St Elizabeth Hospice in Suffolk. The Bright Space, which originally opened in 2019, is supported by the generous community at Bright Horizons Quayside Day Nursery and Preschool.

The Bright Space has undergone a complete re-decoration, including new furniture and soft furnishings to provide a homely, calming and inviting environment, where families and loved ones can relax, talk, play games, watch films together, and create memories; it is also for the staff at the hospice, continuing to support the amazing and tireless work they do.

Amy, Deputy Manager at Quayside Nursery said: "St Elizabeth Hospice has always been close to our hearts with many staff members and families here at Quayside being supported and impacted by the work they do. In 2001, my mum was receiving end of life care, and they not only supported her through this time, but us as a whole family and it's something we will always be grateful for. We hope this space brings even just a little comfort to patients, families, loved ones and the hospice team. We look forward to continuing to work with them to develop the space to meet their needs."

BRIGHTENING LIVES

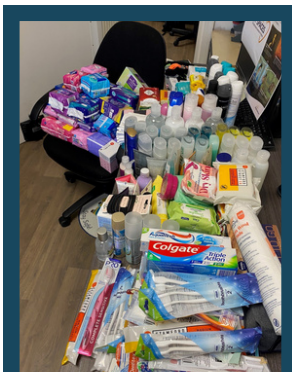
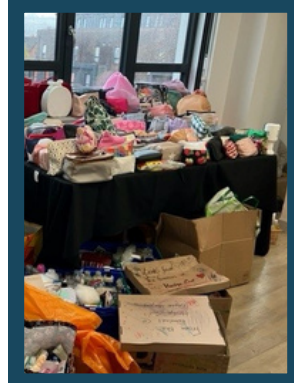
As well as creating and renewing Bright Spaces, we respond to the practical needs of our agency partners. Examples include the provision of baby milk and sanitary protection to Solace Women's Aid refuges in London; providing toiletries, pyjamas, and clothing for vulnerable children staying overnight in Hertfordshire police stations until a foster placement can be found; and donating toiletry bags for women and children living in domestic abuse refuges.

At the Bright Horizons Managers Conference on the 9th of May, we facilitated a social impact session with the delegates. We created 350 Calm Kits which are being donated to our Bright Space partner, the Metropolitan Police Service. The kits will be given to children and young people who are victims of sexual abuse, and attending police stations to be interviewed by the force's Child Abuse Investigation Team.

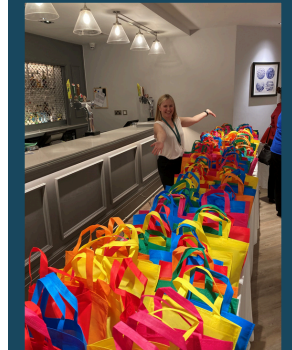
Each kit contains a range of items, including fidget, stress and sensory toys, and mindful colouring, to help children and young people to relax before, during and after their police interviews. This helps them to provide the best possible evidence against the perpetrators, potentially reducing the duration and frequency of the children's interviews.



BH South Division Toiletries



Toiletry collection for Hertfordshire Constabulary



350 Calm Kits at the BH Management Conference

FUNDRAISING NEWS



In 2024, the Bright Horizons Foundation for Children will open its 100th Bright Space in the UK. In recognition of this milestone, we launched our 100 Your Way fundraising campaign, aiming to raise **£100,000** by the end of the year for **#100BrightSpaces**. We have had an incredible response to our campaign so far which, at the time of going to press, has raised **£44,811**, donated by more than **1,595** supporters! Pictured below are:

- **Andrew Duckworth**, Bright Horizons Head of Procurement, and his friend James who completed the 60K Jurassic Coast Ultra Challenge raising **£2,578**. Taking in the beautiful sights of Durdle Door and Lulworth Cove, they completed their challenge in just under 13 hours.
- A team from **Bright Horizons Region C&L 5** sat on all 22,220 seats at Watford FC, in just 47 minutes, raising **£4,333**
- **Deia Deliu** swam 100 lengths of her local pool raising **£660**
- **Bright Horizons Southgate 'Sole Mates'** raised **£4,034** with their 5K walk around Grovelands Park
- **Poppy Hinton**, Early Childhood Specialist, ran 100K raising **£262**
- The children in **Bright Horizons Elm Grove** had a 100 themed fundraising day
- **Bright Horizons St Swithin** had a 100-themed cake sale
- The team from **Bright Horizons North Cheam** took part in a sky dive raising **£5,982** for a Bright Space in memory of their friend and colleague Sarah Burge
- **Luke** from **Bright Horizons Portswood Nursery** took part in a sponsored head shave

Bright Horizons' supplier and contractor partners have also been incredibly generous and collectively donated **more than £7,000**, the equivalent of a new Bright Space in a domestic abuse refuge. They have also donated in-kind by providing labour and materials for new Bright Spaces, and play resources and equipment.

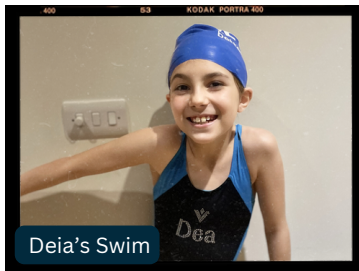
This is just a selection of the amazing efforts and contributions we are seeing across our community, and we appreciate them all, thank you!



Andrew & James Jurassic Coast



Watford FC Bums on Seats



Deia's Swim



Southgate Solemates



Elm Grove 100 themed fun



Poppy Hinton



North Cheam Skydive



St Swithin 100 themed cake sale



Portswood's Luke's headshave

Our heartfelt thanks to the following Bright Horizons' partners:

- Innovation Broking
- CCS Media
- Cosy
- Community Playthings
- GKM Property
- Gompels
- Millhouse
- Lyreco UK
- Affinity
- RME
- Quint
- Heyland and Spratt
- Lostock Installations
- Vincent Electrics
- Harris Evolution
- Denuovo
- Bagnalls
- Linaker
- PDS
- Amazon
- Receptional

JOIN THE FUNDRAISING!

Our fundraising campaign runs all year long, so there is plenty of time to get involved, if you'd like to! You can find out more [here](#).