



Impact Report

The Foundation's purpose is to brighten the lives of children and families affected by adversity, including homelessness, domestic abuse, child abuse, ill health and parental imprisonment.

We create Bright Spaces: trauma-informed indoor and outdoor environments which provide children with the opportunity to play, learn, recover, and build positive relationships, in a place of safety.

We partner with agencies which provide specialist help and support to children and families, including domestic abuse charities, police authorities, HM Prison Service, homeless charities, hospitals and hospices; transforming rooms and gardens on their premises into beautiful sanctuaries for children.

We provide ongoing support to our Bright Spaces by renewing and enhancing resources and donating needed items, for example school stationery, clothing, toiletries, and relaxation kits.

We love hearing about the impact of our Bright Spaces in the words of the people they support:

"The space feels so much brighter, the children are able to see the toys without feeling overwhelmed, and the children seem so much calmer now when they come into the playroom. The mums have also said how much more fun they have playing with their children in a cleaner, tidier space, and feel able to bond more through play. The resources are fantastic; they are for every age and stage and encourage learning and fun." *Solace Women's Aid*



Safer Places Chelmsford Bright Space

"The room's space and design have made a real impact on the children and families who use it. It is warm, inviting, comfortable, and welcoming. Overall, we are extremely satisfied with our partnership with the Bright Horizons Foundation for Children. The support provided has been invaluable, and the impact on the children, families, and staff who use the space has been genuinely meaningful. The partnership has been collaborative, supportive, and has made a lasting difference to our service." *Rape & Sexual Violence Project.*

"The step change in improvements in the environment has been huge. The spaces created are so much more welcoming and relaxing for our users. The young people really respect the spaces and have stated how much more enjoyable it is coming to the Young People's Centre now. ALL the staff involved have been positive, motivated, generous, courteous and a credit to your organisation. We can't thank you enough for the difference that has been made to our facility." *Impact Initiatives Children & Young People's Centre.*

2025 IN NUMBERS:

16 new Bright Spaces opened

30 Bright Spaces renewed

More than £136,000 raised

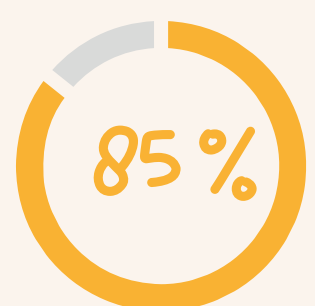
4,782 Just Giving donations

Thousands of children supported

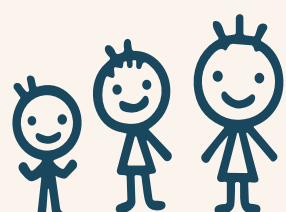
Every year we survey our Bright Space partners to evaluate the impact of their Bright Spaces, and are pleased to share the results:



Every Bright Space partner said their Bright Space has 'some' or a 'major impact' on children and families



Said their Bright Space has a major impact on children and families



Bright Spaces are supporting children of all ages, from infants through to older teens.

We couldn't do this without the support of our incredible volunteers, fundraisers and donors. Thank **you** for making a difference in partnership with us.